



Airport Director's Report

Presented at the February 1, 2017
Airport Community Roundtable Meeting

Aircraft Noise Abatement Office
October 2016



San Francisco
International
Airport

Monthly Noise Exceedance Report

San Francisco International Airport -- Director's Report

Period: **October 2016**



| Airline | Noise Exceedances | | | | Noise Exceedance Quality Rating |
|--------------|-------------------------|----------------------------|----------------------------------|-------|---------------------------------|
| | Total Noise Exceedances | Total Operations per Month | Exceedances per 1,000 Operations | Score | |
| SKW | 43 | 5,842 | 7 | 9.98 | |
| KLM | 1 | 72 | 14 | 9.95 | |
| CSN | 1 | 62 | 16 | 9.95 | |
| CPZ | 18 | 722 | 25 | 9.92 | |
| SWA | 77 | 2,749 | 28 | 9.91 | |
| VRD | 98 | 3,480 | 28 | 9.91 | |
| DAL | 63 | 2,209 | 29 | 9.91 | |
| ETD | 2 | 62 | 32 | 9.89 | |
| FFT | 16 | 482 | 33 | 9.89 | |
| JBU | 37 | 958 | 39 | 9.87 | |
| ASA | 47 | 1,037 | 45 | 9.85 | |
| WOW | 2 | 42 | 48 | 9.84 | |
| ANZ | 3 | 62 | 48 | 9.84 | |
| BAW | 6 | 124 | 48 | 9.84 | |
| DLH | 6 | 124 | 48 | 9.84 | |
| ACA | 36 | 721 | 50 | 9.84 | |
| UAL | 590 | 11,260 | 52 | 9.83 | |
| AAL | 146 | 2,718 | 54 | 9.82 | |
| WJA | 7 | 89 | 79 | 9.74 | |
| CCA | 12 | 98 | 122 | 9.60 | |
| FDX | 12 | 85 | 141 | 9.54 | |
| CMP | 10 | 62 | 161 | 9.47 | |
| AMX | 29 | 176 | 165 | 9.46 | |
| NCA | 7 | 41 | 171 | 9.44 | |
| HAL | 24 | 124 | 194 | 9.37 | |
| TAI | 19 | 89 | 213 | 9.30 | |
| GTI | 19 | 88 | 216 | 9.29 | |
| AIC | 8 | 26 | 308 | 8.99 | |
| SIA | 42 | 124 | 339 | 8.89 | |
| CKS | 3 | 8 | 375 | 8.77 | |
| JAL | 30 | 63 | 476 | 8.44 | |
| EVA | 67 | 134 | 500 | 8.36 | |
| CPA | 75 | 144 | 521 | 8.30 | |
| CAL | 65 | 110 | 591 | 8.07 | |
| KAL | 85 | 122 | 697 | 7.72 | |
| AAR | 114 | 114 | 1,000 | 6.73 | |
| PAL | 63 | 62 | 1,016 | 6.67 | |
| QFA | 165 | 54 | 3,056 | 0.00 | |
| TOTAL | 2,048 | 34,539 | 10,985 | | |

Source: SFO Noise Abatement Office

Historical Significant Exceedances Report
 San Francisco International Airport -- Director's Report
 Period: **October 2016**



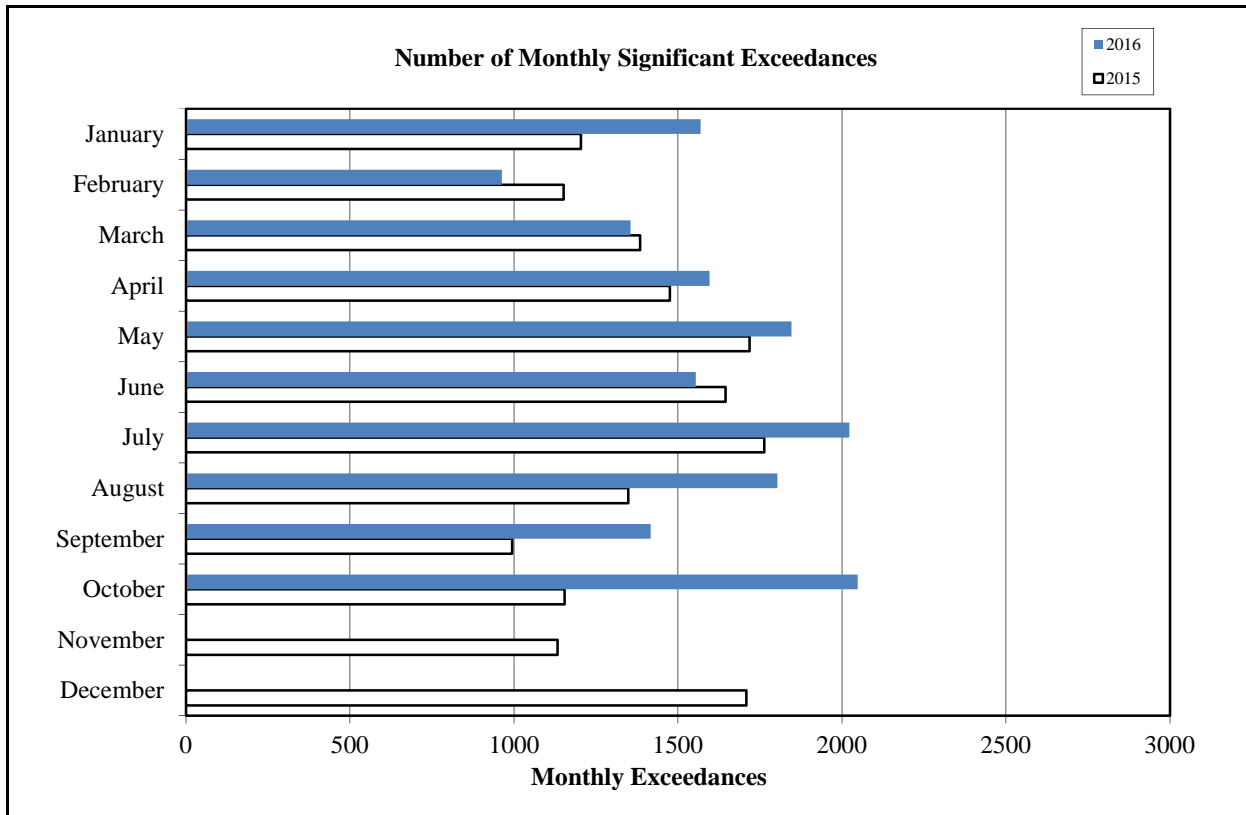
San Francisco International Airport

| Month | Number of Monthly Significant Exceedances | | | | | Change from Last Year |
|---------------------------|---|---------------|---------------|---------------|---------------|-----------------------|
| | 2012 | 2013 | 2014 | 2015 | 2016 | |
| January | 1,378 | 1,428 | 1,184 | 1,204 | 1,569 | 365 |
| February | 1,581 | 1,176 | 1,141 | 1,151 | 963 | -188 |
| March | 1,703 | 1,671 | 1,345 | 1,384 | 1,355 | -29 |
| April | 1,870 | 1,910* | 1,362 | 1,475 | 1,596 | 121 |
| May | 1,912 | 1,859* | 1,515 | 1,718 | 1,846 | 128 |
| June | 2,355 | 1,915 | 1,740 | 1,645 | 1,554 | -91 |
| July | 2,621 | 1,647 | 1,619 | 1,763*** | 2,023 | 260 |
| August | 1,823 | 1,638** | 1,460 | 1,348 | 1,803 | 455 |
| September | 1,464 | 1,352 | 1,111 | 994 | 1,417 | 423 |
| October | 1,689 | 1,277 | 1,055 | 1,154 | 2,048 | 894 |
| November | 1,421 | 1,262 | 1,245 | 1,133 | | 0 |
| December | 1,439 | 1,160 | 1,670 | 1,708 | | 0 |
| Annual Total | 21,256 | 18,295 | 16,447 | 16,677 | 16,174 | |
| Year to Date Trend | 21,256 | 18,295 | 16,447 | 16,677 | 16,174 | 2338 |

* Revised with correct amount of exceedance - 8/5/13

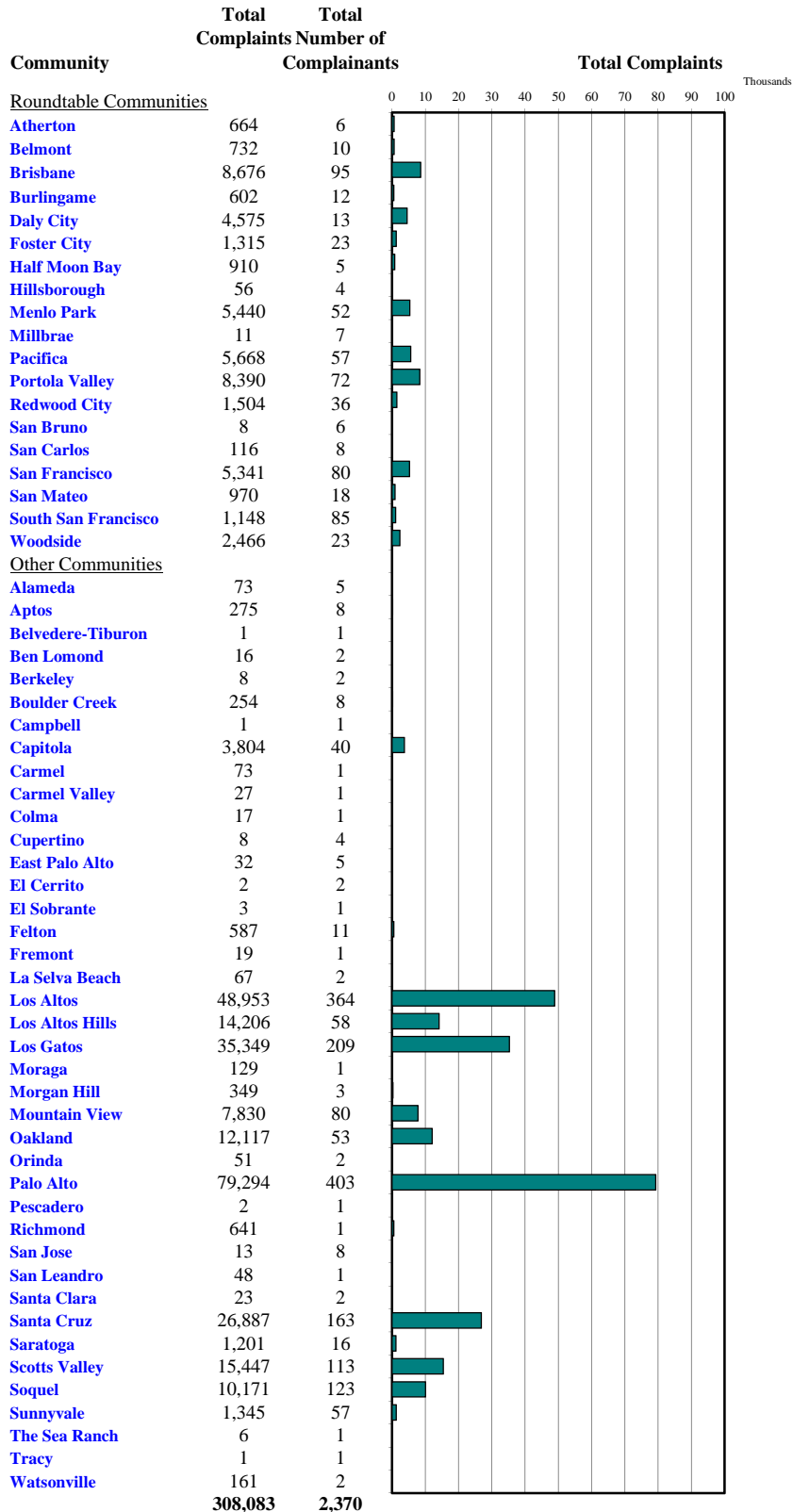
** No data available from Site 7, August 1-26

***No data available from Site 2 starting July 17



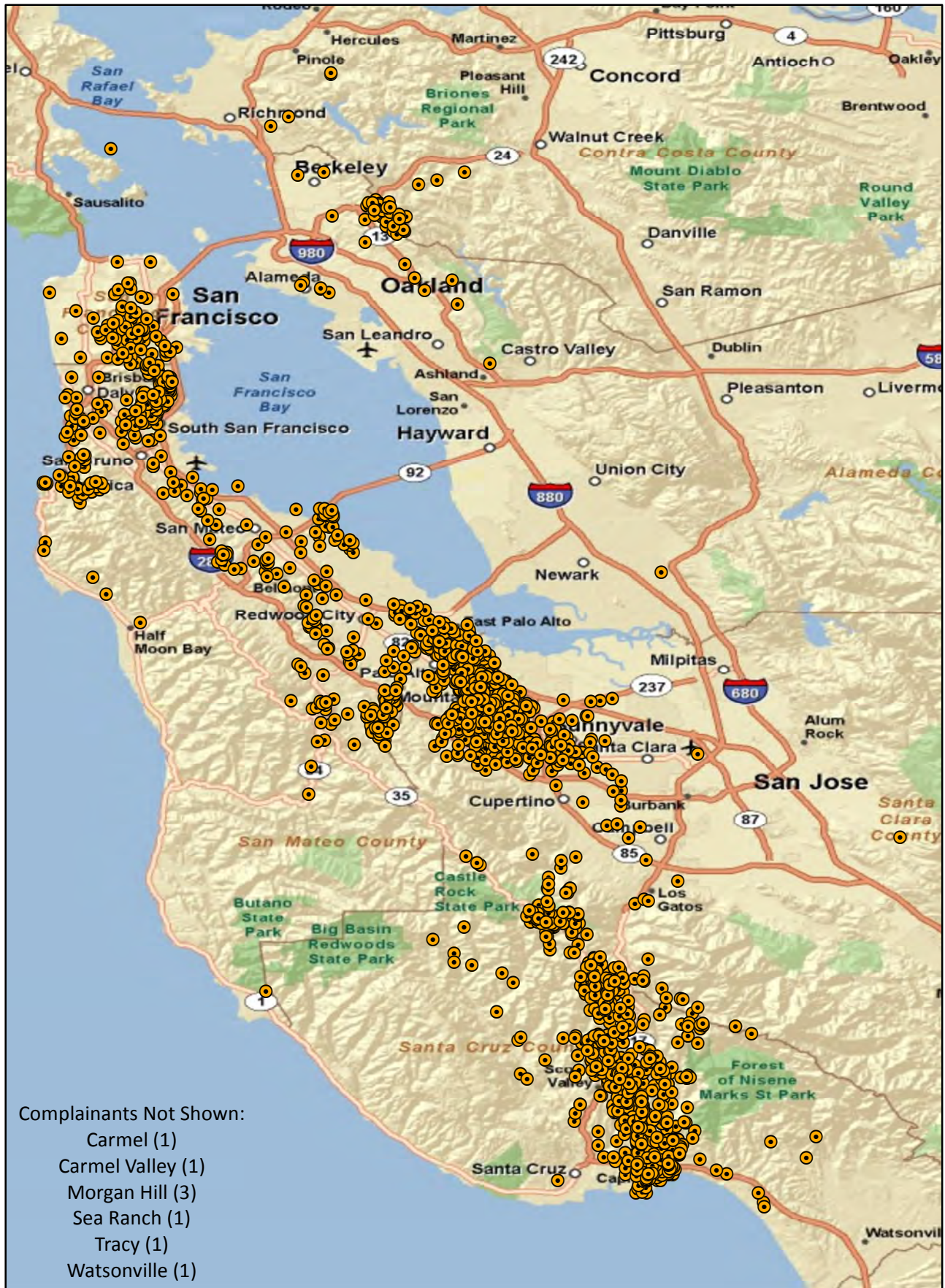
Monthly Calls by Community

Source: Airport Noise Monitoring System



"Our software vendor's address validation relies on USPS-provided ZIP code look up table and USPS-specified 'default city' values."

Monthly Noise Complainant Summary Map October 2016



“Our software vendor’s address validation relies on USPS-provided ZIP code look-up table and the USPS-specified ‘default city’ values”

● Complainant Location




Monthly Nighttime Power Runups Report (85-06-AOB)

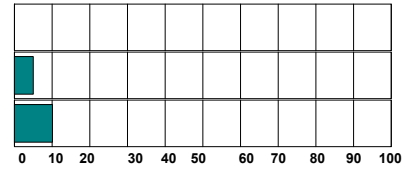
San Francisco International Airport -- Director's Report

Period : **October 2016**

Time of Day : From 10 pm through 7 am



| Airline | Code | Number of Runups | Runups Per 1,000 Departures | Percentage of Runups |
|---|------|------------------|-----------------------------|----------------------|
|  | VRD | 1 | 0.6 | 6% |
|  | UAL | 6 | 1.1 | 33% |
|  | AAL | 11 | 8.1 | 61% |
| Total | | 18 | | |



A power runup is a procedure used to test an aircraft engine after maintenance is completed.

This is done to ensure safe operating standards prior to returning the aircraft to service.

The power settings tested range from idle to full power and may vary in duration.

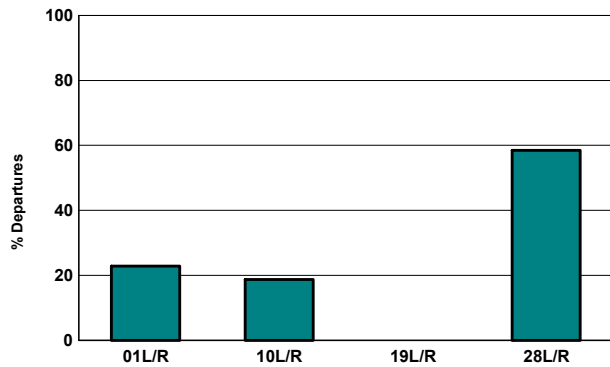


Runway Utilization (1 am to 6 am)

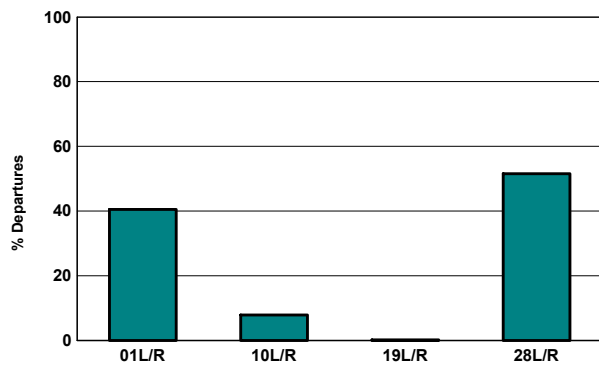
Monthly Jet Departures

| | Jan | Feb | Mar | Apr | May | Jun | Jul | Aug | Sep | Oct | Nov | Dec | YTD |
|--------------|------------|------------|------------|------------|------------|------------|------------|------------|------------|------------|-----|-----|--------------|
| 01L/R | 155 | 149 | 168 | 166 | 167 | 216 | 335 | 265 | 140 | 111 | - | - | 1,872 |
| 10L/R | 72 | 14 | 85 | 8 | 3 | 9 | 19 | 27 | 36 | 91 | - | - | 364 |
| 19L/R | 5 | - | - | - | - | - | - | - | - | - | - | - | 5 |
| 28L/R | 85 | 93 | 216 | 250 | 287 | 282 | 298 | 309 | 278 | 284 | - | - | 2,382 |
| Total | 317 | 256 | 469 | 424 | 457 | 507 | 652 | 601 | 454 | 486 | - | - | 4,623 |
| 01L/R | 49% | 58% | 36% | 39% | 37% | 43% | 51% | 44% | 31% | 23% | 0% | 0% | 40% |
| 10L/R | 23% | 5% | 18% | 2% | 1% | 2% | 3% | 4% | 8% | 19% | 0% | 0% | 8% |
| 19L/R | 2% | 0% | 0% | 0% | 0% | 0% | 0% | 0% | 0% | 0% | 0% | 0% | 0% |
| 28L/R | 27% | 36% | 46% | 59% | 63% | 56% | 46% | 51% | 61% | 58% | 0% | 0% | 52% |

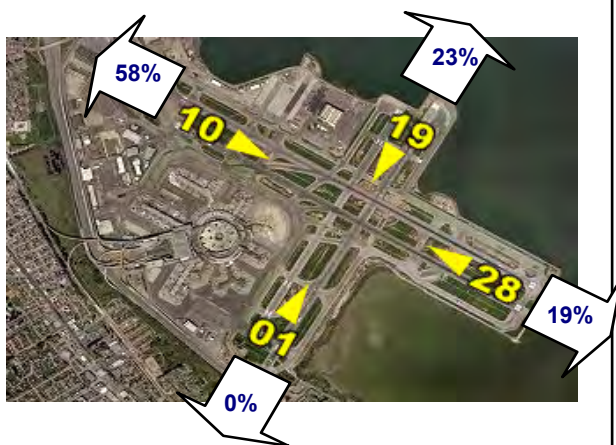
Current Month (1 am to 6 am)



Year-to-Date (1am to 6 am)

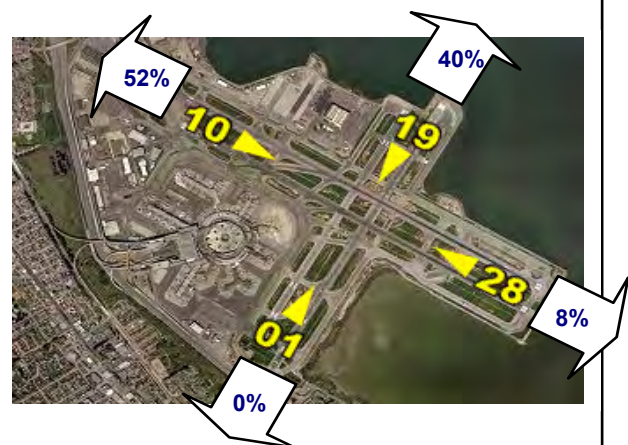


Current Month (1 am to 6 am)



Numbers rounded to nearest whole percentages

Year-to-Date (1am to 6am)



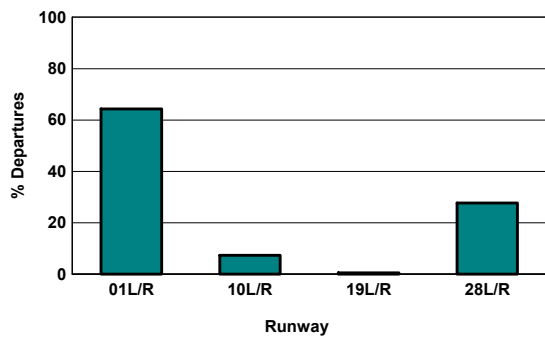
Numbers rounded to nearest whole percentages

Runway Utilization (All Hours)

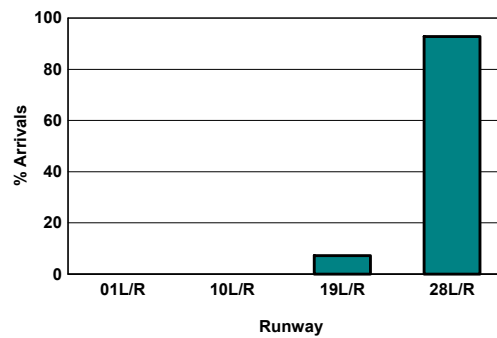
Source: Airport Noise Monitoring System

| | Runway Utilization | | | | Total |
|---------------------------------|--------------------|-------|-------|--------|--------|
| | 01L/R | 10L/R | 19L/R | 28L/R | |
| Total Monthly Operations | | | | | |
| Departures | 11,249 | 1,292 | 88 | 4,853 | 17,482 |
| Arrivals | 0 | 0 | 1,261 | 16,190 | 17,451 |
| Percentage Utilization | | | | | |
| Departures | 64.3% | 7.4% | 0.5% | 27.8% | 100% |
| Arrivals | 0.0% | 0.0% | 7.2% | 92.8% | 100% |

Departures (All Hours)



Arrivals (All Hours)



Percentage Departure Utilization



Numbers rounded to nearest whole percentages

Percentage Arrival Utilization



Numbers rounded to nearest whole percentages